

MONTHLY MEMBERSHIP PROGRESS REPORT

District 13 OH1

Results as of: 6/30/2025

GMT:

LOCATION OHIO

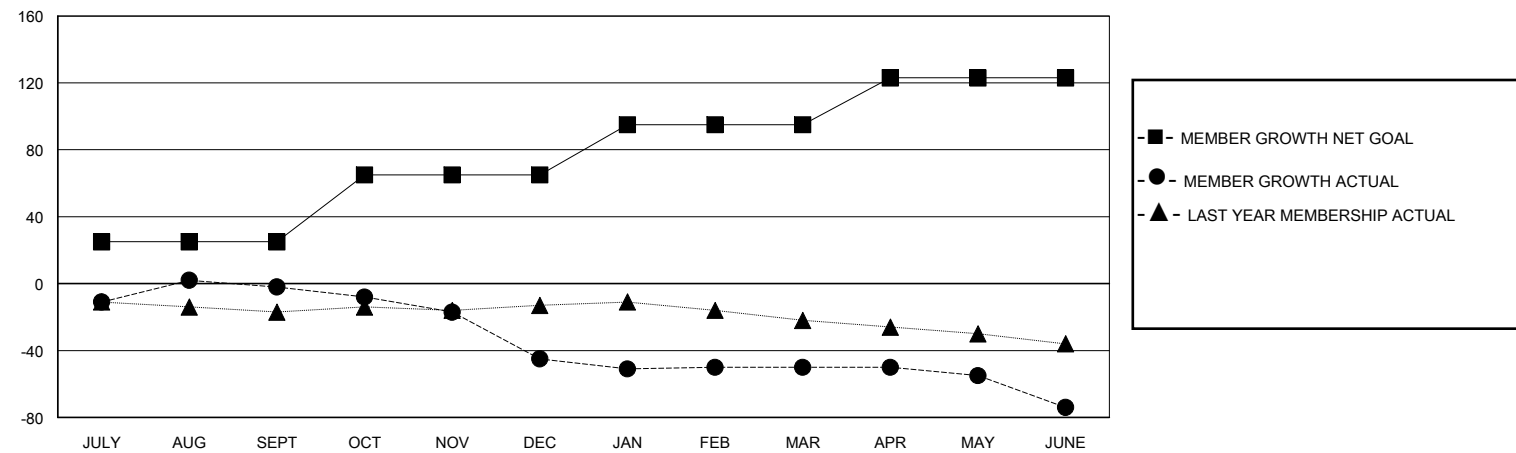
GMT CA

Clubs				Members			
RESULTS FOR 2024-2025				RESULTS FOR 2024-2025			
QUARTER	NEW CLUB GOAL	NEW CLUBS	DROPPED CLUBS	QUARTER	MEMBER GROWTH NET GOAL	MEMBER GROWTH ACTUAL	DROPPED MEMBERS ACTUAL (including transfers)
JULY/AUG/SEPT	0	0	0	JULY/AUG/SEPT	25	27	28
OCT/NOV/DEC	1	0	0	OCT/NOV/DEC	40	23	62
JAN/FEB/MAR	0	0	0	JAN/FEB/MAR	30	22	27
APR/MAY/JUNE	0	0	1	APR/MAY/JUNE	28	18	41

GOALS AND ACTUAL NEW CLUBS CUMULATIVE



GOALS AND ACTUAL MEMBERS CUMULATIVE



DROPPED CLUBS: 1	28 CLUBS OF 49 ADDED 1 OR MORE NEW MEMBERS	<u>GENDER DISTRIBUTION</u> MALE 1,051 (78.79%) FEMALE 283 (21.21%)
<u>DROPPED MEMBERS</u> DECEASED 22 CLUB CANCELLED 11 OTHER 124 TOTAL 157	CLICK HERE FOR CUMULATIVE MEMBERSHIP DATA	TOTAL FAMILY UNIT MEMBERS 209 FAMILY MEMBERS PAYING HALF DUES 107